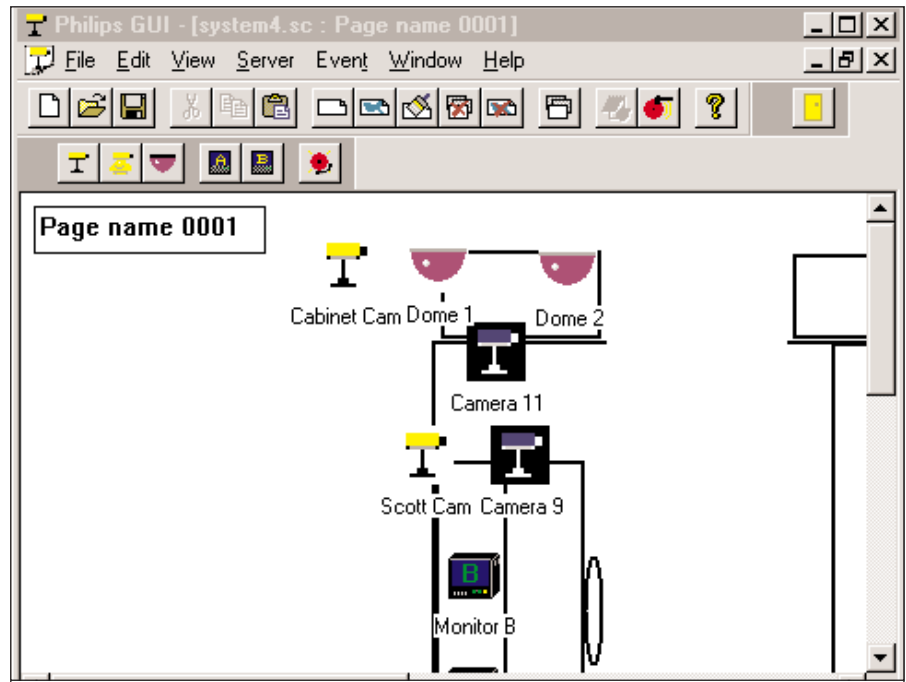


LTC 2650/00 Philips System4 GUI

- Interfaces with All System4 Series Systems
- Capable of Running Several System4 & Allegiant® Systems on One Map
- Integration of All Software Modules within a Single Program
- Alarm Event Logging and Reporting
- Direct Import of Map Files Created Using Popular Drawing Packages
- Controls VCRs Equipped with RS-232



The Philips System4 Graphical User Interface (GUI) interfaces directly to the System4 series of video management control systems to provide complete control and programming of all System4 features. It is a software package that runs on standard PCs and incorporates Microsoft® OLE (Object Linking and Embedding) technology to harness the full 32-bit power of the Windows NT, Windows 98, and Windows 95 Operating Systems.

The GUI software modules provide a single user interface for configuring, programming, and operating a security system. There is never a need to exit the system to access external security related software modules. Different levels of accessibility are available for users (Installer, Administrator, and Operator) to determine the set of features presented to each user. Site maps or other drawings (DXF, HPGL,

BMP, etc.) are easily loaded directly into the GUI, where they can be "seeded" with special "link icons" to maneuver between map pages. With a mouse click, icon configuration menus are then presented, allowing quick association of the icon with a hardware device. A special function icon is available which enables custom user-defined actions to be easily activated by the click of a mouse button. The LTC 2650/00 software packages include a VCR interface program known as the VCR server which can operate multiple Philips VCRs directly from the GUI by using an RS-232 interface. With the use of the configuration tables, monitor, and alarm handler applications, anything that can be accomplished through the System4 front panel or LTC 2600 keyboards can be easily executed through the GUI by the use of "pop up" control panels. All functions, including those of the AutoDome® system with programmable configuration capabilities

and variable speed pan/tilt/zoom, are fully operational via the graphical control panels.

Since the LTC 2650/00 is a part of the Philips map application, it is also capable of running several System4/Allegiant systems on one map which contains a powerful centralized "event handler" module that is capable of processing events from multiple systems. When an alarm condition occurs, the event handler activates the GUI's response using a pop up window containing a "hot button" icon for each event, giving the user the ability to identify and control the system's response to that condition or event.

Microsoft® and Windows® are registered trademarks of Microsoft Corporation. Pentium® is a registered trademark of Intel Corporation.

SPECIFICATIONS

LTC 2650/00 Philips System4 GUI

Format: Software supplied on 3.5-inch floppy disk. Software security provided by means of parallel port key.

Minimum System Requirements - PC Platform

Pentium® 120 MHz CPU and SVGA Monitor.

8 MB RAM (with Windows 95).

16 MB RAM (with Windows NT).

250 MB Fixed Drive.

3.5-inch High Density Floppy Disk Drive.

Windows NT version 4.0 (Service Pack 3 or later) or

Windows 95 Operating System (Windows 95 compatible with GUI release version 2.0 or greater).

Ports Required (Minimum): 1 Parallel, 1 Serial (additional serial ports required if multiple systems are being controlled) for interface to the switcher. In addition, one serial port is required for each VCR to be controlled.

Pointing Device: Mouse, Trackball, or Touch Screen.

System Features

Complete Multilevel Map Displays

The system will directly import graphics files from most drawing packages. Supported file formats include DXF (up to DXF revision 12), HPGL, BMP, and many other popular graphical file formats. This feature permits the installer to directly use preexisting site maps and building drawings without the need to recreate new drawings and building plans. Site maps may be easily linked to allow the user to move seamlessly from top level site drawings to individual low level locations and back again.

Alarm Handling

Powerful Alarm handling software permits on-screen callup of site maps as well as the display of live inset Alarm Video. Customized Guard instructions may be programmed to display on-screen instructions which may be keyed to individual alarms.

Data Logging and Reporting

A record of all major system events may be stored on disk for subsequent recall and review.

Icon Library

A complete Icon Library is available to the installer to seed graphical representations of system functions directly on the map displays.



PHILIPS

Let's make things better.